



CIRCLE

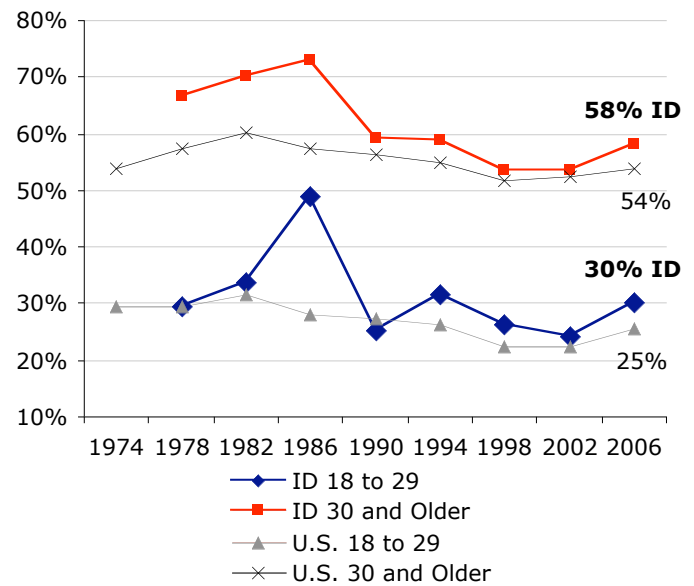
The Center for Information & Research on
Civic Learning & Engagement

Quick Facts about Young Voters in Idaho: The Midterm Election Year 2006

By Mark Hugo Lopez, Karlo Barrios Marcelo, and Jared Sagoff¹
Updated June 2007

The 2006 midterm election was the second major election in a row that saw an increase in the electoral participation of young people ages 18-29. Between 2002 and 2006, the percentage of eligible young people who voted increased by 3 percentage points to 25 percent, the single largest increase among all age groups nationally.² Similarly, while youth electoral participation improved between 2002 and 2006 nationally, in Idaho, the youth voter turnout rate rose 6 percentage points from 24 percent in 2002 to 30 percent in 2006. Overall, Idaho ranked 15th (tied with AK, ND, and WA) among all states and the District of Columbia in 2006, up from 18th in 2002, and was five percentage points higher than the nation as a whole.

Graph 1: Idaho Voter Turnout in Midterm Years Among Citizens, by Age



Source: Current Population Survey, November Supplements, 1974-2006.

This fact sheet reports the characteristics of young voters for the state of Idaho, including estimates of the number of young voters, and voter turnout rates in 2006 and 2002 for various sub-groups of young people.

Estimates of Eligible Young Voters, 2006

In 2006, a midterm election year, an estimated 215,000 young people in Idaho were eligible to vote in U.S. elections. Table 1 shows voting statistics for the years 2006 and 2002.

Table 1 – Idaho Voter Turnout Statistics, 2006 and 2002

	Young People 18 to 29	Adults 30 and Older
2006		
Number of Votes Cast	64 thousand	458 thousand
Voter Turnout Rate	30 percent	58 percent
Share of all Voters	12 percent	88 percent
2002		
Number of Votes Cast	55 thousand	371 thousand
Voter Turnout Rate	24 percent	53 percent
Share of all Voters	13 percent	87 percent

Source: Authors' Tabulations, Current Population Survey, November Supplement 2006 and 2002.

Voter Turnout Rates in 2006 and 2002 Among Eligible Young Citizens

Table 2 displays voter turnout rates for various groups of young people in 2006 and 2002 in Idaho. In 2006, voter turnout among many youth groups in Idaho was higher than in 2002. Only married woman voted at a lower rate (one percentage point) in 2006 than in 2002.

Table 2 – Idaho Voter Turnout Rates Among Young Citizens ages 18 to 29, 2006 and 2002

Voter Turnout Rate Among:	2006	2002
Gender		
Women	32 percent	21 percent
Men	29 percent	27 percent
Educational Attainment		
Less than High School	***	5 percent
High School	21 percent	16 percent
Some College	45 percent	30 percent
BA or more	***	49 percent
Marital Status		
Single Men	28 percent	22 percent
Single Women	35 percent	18 percent
Married Men	***	35 percent
Married Women	29 percent	30 percent
Registered Voter	68 percent	61 percent
All Youth, Idaho	30 percent	24 percent
All Youth, National	25 percent	22 percent

Source: Authors' Tabulations from the 2006 and 2002 November Supplements of the Current Population Survey. '***' indicates a sample size is too small to produce a reliable estimate.

Notes

¹ Research Director, Research Associate, and Research Assistant, respectively. We also thank Peter Levine, Emily Kirby, Abby Kiesa, and Deborah Both for comments on previous drafts of this fact sheet.

² See "Youth Voter Turnout Increases in 2006" by Mark Hugo Lopez, Karlo Barrios Marcelo, and Emily Hoban Kirby for a longer discussion of youth voter turnout trends in 2006.