



## CIRCLE

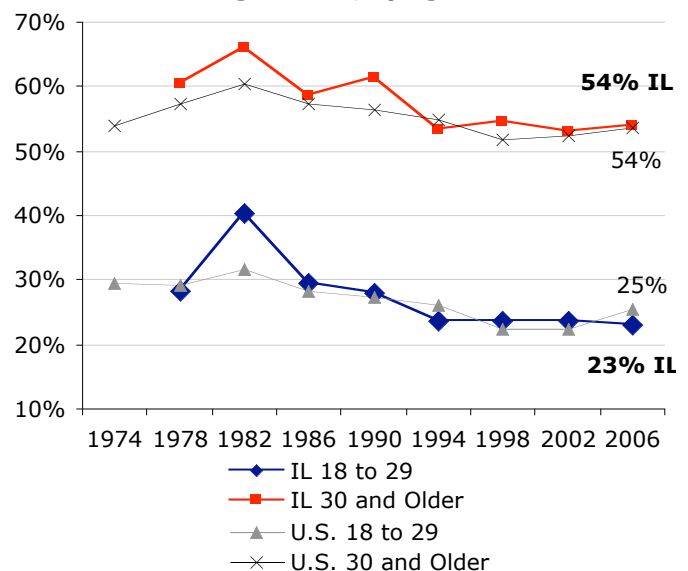
The Center for Information & Research on  
Civic Learning & Engagement

### Quick Facts about Young Voters in Illinois: The Midterm Election Year 2006

By Mark Hugo Lopez, Karlo Barrios Marcelo, and Jared Sagoff<sup>1</sup>  
Updated June 2007

The 2006 midterm election was the second major election in a row that saw an increase in the electoral participation of young people ages 18-29. Between 2002 and 2006, the percentage of eligible young people who voted increased by 3 percentage points to 25 percent, the single largest increase among all age groups nationally.<sup>2</sup> However, while youth electoral participation improved between 2002 and 2006 nationally, in Illinois, the youth voter turnout rate remained unchanged at 23 percentage points. Overall, Illinois ranked 34<sup>th</sup> (tied with AZ, IN, and TN) among all states and the District of Columbia in 2006, down from 23<sup>rd</sup> in 2002, and was two percentage points lower than the nation as a whole.

**Graph 1: Illinois Voter Turnout in Midterm Years Among Citizens, by Age**



Source: Current Population Survey, November Supplements, 1974-2006.

This fact sheet reports the characteristics of young voters for the state of Illinois, including estimates of the number of young voters, and voter turnout rates in 2006 and 2002 for various sub-groups of young people.

### Youth Turnout Estimates, 2006

In 2006, a midterm election year, an estimated 1.9 million young people in Illinois were eligible to vote in U.S. elections. Table 1 shows voting statistics for the years 2006 and 2002, the last midterm election year.

**Table 1 – Illinois Voter Turnout Statistics, 2006 and 2002**

	Young People 18 to 29	Adults 30 and Older
<b>2006</b>		
Number of Votes Cast	407 thousand	3.6 million
Voter Turnout Rate	23 percent	54 percent
Share of all Voters	10 percent	90 percent
<b>2002</b>		
Number of Votes Cast	416 thousand	3.4 million
Voter Turnout Rate	23 percent	53 percent
Share of all Voters	11 percent	89 percent

Source: Authors' Tabulations, Current Population Survey, November Supplement 2006 and 2002.

### Voter Turnout Rates in 2006 and 2002 Among Eligible Young Citizens

Table 2 displays voter turnout rates for various groups of young people in 2006 and 2002 in Illinois. In 2006, voter turnout among many youth groups in Illinois was low. Black non-Hispanics had a substantial decrease in voter turnout 2002 and 2006. The trend of increasing youth voter participation in midterm election years for Black youth has taken a sudden drop in 2006. (See Graph 2.)

For all other groups of young people, voter turnout rates were relatively unchanged between 2002 and 2006, with increases evident for young whites (up 4 points), young Latinos (up 2 points), and young people with a B.A. or more (up 8 points).

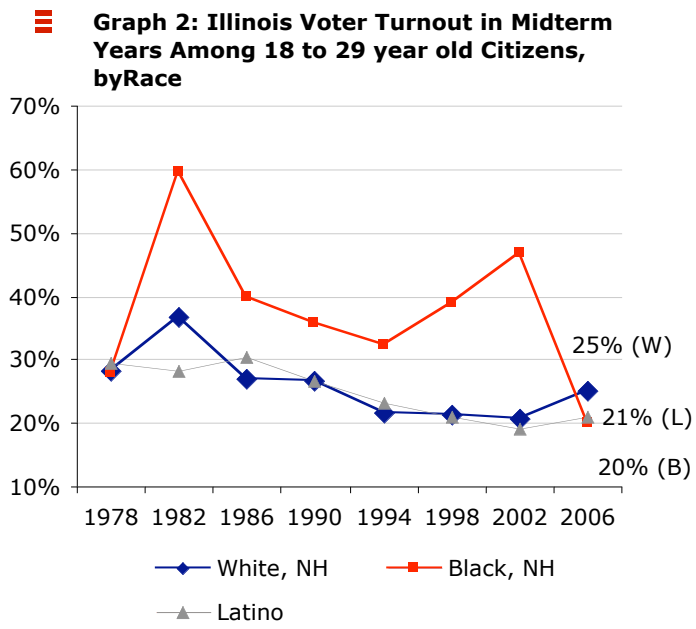
### Partisanship Among Young Voters in 2006

According to analysis of the Election Pool, Exit Poll data, the majority (55 percent) of young voters (ages 18 to 29) in Illinois identified as Democrat, regardless of how they voted in the 2006 elections.

**Table 2 – Illinois Voter Turnout Rates Among Young Citizens ages 18 to 29, 2006 and 2002**

Voter Turnout Rate Among:	2006	2002
<b>Race/Ethnicity<sup>3</sup></b>		
White non-Hispanics	25 percent	21 percent
Black non-Hispanics	20 percent	47 percent
Latinos	21 percent	19 percent
Asian non-Hispanics	***	***
Native American non-Hispanics	***	***
<b>Gender</b>		
Women	27 percent	27 percent
Men	19 percent	19 percent
<b>Educational Attainment</b>		
Less than High School	16 percent	15 percent
High School	20 percent	19 percent
Some College	24 percent	24 percent
BA or more	28 percent	36 percent
<b>Marital Status</b>		
Single Men	19 percent	18 percent
Single Women	26 percent	26 percent
Married Men	***	26 percent
Married Women	28 percent	39 percent
Registered Voter	45 percent	50 percent
All Youth, Illinois	23 percent	23 percent
All Youth, National	25 percent	22 percent

Source: Authors' Tabulations from the 2006 and 2002 November Supplements of the Current Population Survey. '\*\*\*' indicates a sample size is too small to produce a reliable estimate.



Source: Current Population Survey, November Supplements, 1978-2006.

## Notes

<sup>1</sup> Research Director, Research Associate, and Research Assistant, respectively. We also thank Peter Levine, Emily Kirby, Abby Kiesa, and Deborah Both for comments on previous drafts of this fact sheet.

<sup>2</sup> See "Youth Voter Turnout Increases in 2006" by Mark Hugo Lopez, Karlo Barrios Marcelo, and Emily Hoban Kirby for a longer discussion of youth voter turnout trends in 2006.

<sup>3</sup> We have defined racial/ethnic groups in the Current Population Survey November Supplements by defining anyone with Hispanic background as Latino; individuals who cite a single non-Hispanic race or ethnicity are identified as non-Hispanic white, African American, Asian American or Native American.