



CIRCLE

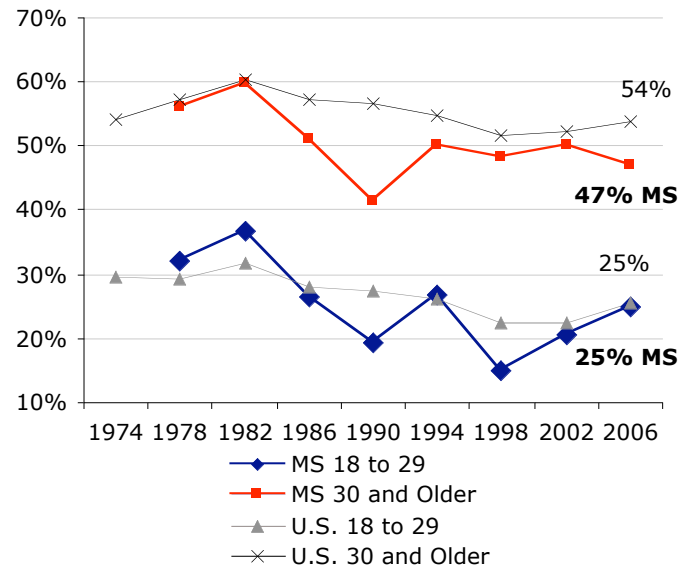
The Center for Information & Research on
Civic Learning & Engagement

Quick Facts about Young Voters in Mississippi: The Midterm Election Year 2006

By Mark Hugo Lopez, Karlo Barrios Marcelo, and Jared Sagoff¹
Updated June 2007

The 2006 midterm election was the second major election in a row that saw an increase in the electoral participation of young people ages 18-29. Between 2002 and 2006, the percentage of eligible young people who voted increased by 3 percentage points to 25 percent, the single largest increase among all age groups nationally.² Similarly, while youth electoral participation improved between 2002 and 2006 nationally, in Mississippi, the youth voter turnout rate rose 4 percentage points from 21 percent in 2002 to 25 percent in 2006. Overall, Mississippi ranked 27th (tied with CA and DE) among all states and the District of Columbia in 2006, up from 33rd in 2002.

Graph 1: Mississippi Voter Turnout in Midterm Years Among Citizens, by Age



Source: Current Population Survey, November Supplements, 1974-2006.

This fact sheet reports the characteristics of young voters for the state of Mississippi, including estimates of the number of young voters, and voter turnout rates in 2006 and 2002 for various sub-groups of young people.

Youth Turnout Estimates, 2006

In 2006, a midterm election year, there were an estimated 440,000 young people in Mississippi who were eligible to vote in U.S. elections. Table 1 shows voting statistics for the years 2006 and 2002.

Voter Turnout Rates in 2006 and 2002 Among Eligible Young Citizens, Ages 18-29

Table 2 displays voter turnout rates for various groups of young people ages 18 to 29 in 2006 and 2002 in Mississippi. In 2002, voter turnout among many youth groups in Mississippi was up from 2002. Single men had a voter turnout rate of 43 percent, the highest group in the table. Black non-Hispanics increased their participation from 2002 levels (up 13 points).

Table 1 – Mississippi Voter Turnout Statistics, 2006 and 2002

	Young People 18 to 29	Adults 30 and Older
2006		
Number of Votes Cast	107 thousand	771 thousand
Voter Turnout Rate	25 percent	47 percent
Share of all Voters	12 percent	88 percent
2002		
Number of Votes Cast	100 thousand	758 thousand
Voter Turnout Rate	21 percent	50 percent
Share of all Voters	12 percent	88 percent

Source: Authors' Tabulations, Current Population Survey, November Supplement 2006 and 2002.

Table 2 – Mississippi Voter Turnout Rates Among Young Citizens ages 18 to 29, 2006 and 2002

Voter Turnout Rate Among:	2006	2002
Race/Ethnicity³		
White non-Hispanics	18 percent	19 percent
Black non-Hispanics	36 percent	23 percent
Hispanics	***	***
Asian non-Hispanics	***	***
Native American non-Hispanics	***	***
Gender		
Women	34 percent	26 percent
Men	15 percent	14 percent
Educational Attainment		
Less than High School	***	10 percent
High School	31 percent	20 percent
Some College	28 percent	26 percent
BA or more	***	24 percent
Marital Status		
Single Men	43 percent	16 percent
Single Women	***	27 percent
Married Men	***	11 percent
Married Women		30 percent
Registered Voter	51 percent	43 percent
All Youth, Mississippi	25 percent	21 percent
All Youth, National	25 percent	22 percent

Source: Authors' Tabulations from the 2006 and 2002 November Supplements of the Current Population Survey. '***' indicates a sample size is too small to produce a reliable estimate.

Notes

¹ Research Director, Research Associate, and Research Assistant, respectively. We also thank Peter Levine, Emily Kirby, Abby Kiesa, and Deborah Both for comments on previous drafts of this fact sheet.

² See “Youth Voter Turnout Increases in 2006” by Mark Hugo Lopez, Karlo Barrios Marcelo, and Emily Hoban Kirby for a longer discussion of youth voter turnout trends in 2006.

³ We have defined racial/ethnic groups in the Current Population Survey November Supplements by defining anyone with Hispanic background as Latino; individuals who cite a single non-Hispanic race or ethnicity are identified as non-Hispanic white, African American, Asian American or Native American.