



CIRCLE

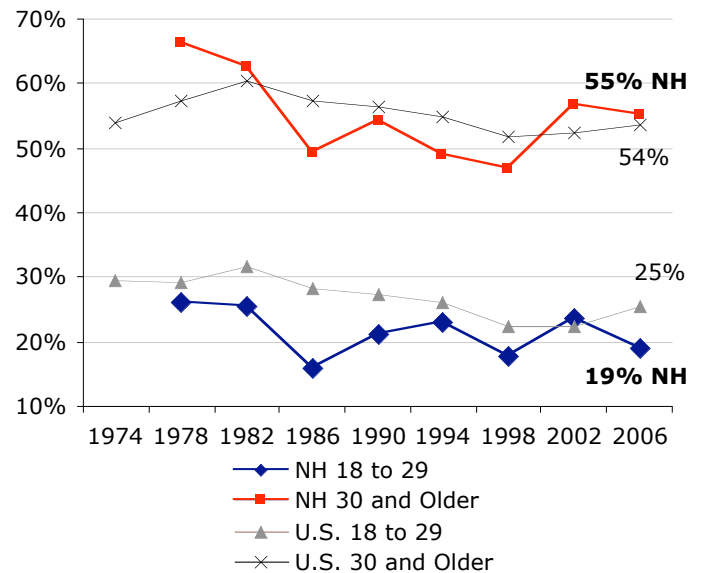
The Center for Information & Research on
Civic Learning & Engagement

Quick Facts about Young Voters in New Hampshire: The Midterm Election Year 2006

By Mark Hugo Lopez, Karlo Barrios Marcelo, and Jared Sagoff¹
Updated June 2007

The 2006 midterm election was the second major election in a row that saw an increase in the electoral participation of young people ages 18-29. Between 2002 and 2006, the percentage of eligible young people who voted increased by 3 percentage points to 25 percent, the single largest increase among all age groups nationally.² However, while youth electoral participation improved between 2002 and 2006 nationally, in New Hampshire, the youth voter turnout rate fell 5 percentage points from 24 percent in 2002 to 19 percent in 2006. Overall, New Hampshire ranked 45th (tied with NY) among all states and the District of Columbia in 2006, down from 18th in 2002, and was six percentage points lower than the nation as a whole.

Graph 1: New Hampshire Voter Turnout in Midterm Years Among Citizens, by Age



Source: Current Population Survey, November Supplements, 1974-2006.

This fact sheet reports the characteristics of young voters for the state of New Hampshire, including estimates of the number of young voters, and voter turnout rates in 2006 and 2002 for various sub-groups of young people.

Youth Turnout Estimates, 2006

In 2006, a midterm election year, an estimated 172,000 young people in New Hampshire were eligible to vote in U.S. elections. Table 1 shows voting statistics for the years 2006 and 2002.

Voter Turnout Rates in 2006 and 2002 Among Eligible Young Citizens, Ages 18-29

Table 2 displays voter turnout rates for various groups of young people in 2006 and 2002 in New Hampshire. In 2006, voter turnout among many youth groups in New Hampshire was very low; turnout rates among all groups fell in 2006 from 2002 levels.

Table 1 – New Hampshire Voter Turnout Statistics, 2006 and 2002

	Young People 18 to 29	Adults 30 and Older
2006		
Number of Votes Cast	36 thousand	441 thousand
Voter Turnout Rate	19 percent	55 percent
Share of all Voters	8 percent	92 percent
2002		
Number of Votes Cast	38 thousand	421 thousand
Voter Turnout Rate	24 percent	57 percent
Share of all Voters	8 percent	92 percent

Source: Authors' Tabulations, Current Population Survey, November Supplement 2006 and 2002.

Table 2 – New Hampshire Voter Turnout Rates Among Young Citizens ages 18 to 29, 2006 and 2002

Voter Turnout Rate Among:	2006	2002
Gender		
Women	22 percent	24 percent
Men	17 percent	23 percent
Educational Attainment		
Less than High School	***	25 percent
High School	10 percent	11 percent
Some College	17 percent	25 percent
BA or more	35 percent	46 percent
Marital Status		
Single Men	17 percent	20 percent
Single Women	17 percent	23 percent
Married Men	***	28 percent
Married Women	32 percent	15 percent
Registered Voter	41 percent	60 percent
All Youth, New Hampshire	19 percent	24 percent
All Youth, National	25 percent	22 percent

Source: Authors' Tabulations from the 2006 and 2002 November Supplements of the Current Population Survey. '***' indicates a sample size is too small to produce a reliable estimate.

Notes

¹ Research Director, Research Associate, and Research Assistant, respectively. We also thank Peter Levine, Emily Kirby, Abby Kiesa, and Deborah Both for comments on previous drafts of this fact sheet.

² See "Youth Voter Turnout Increases in 2006" by Mark Hugo Lopez, Karlo Barrios Marcelo, and Emily Hoban Kirby for a longer discussion of youth voter turnout trends in 2006.