



CIRCLE

The Center for Information & Research on
Civic Learning & Engagement

Quick Facts About Young Voters in Connecticut: The Primary Election Year 2008

By Karlo Barrios Marcelo¹
January 2008

Connecticut's young voters will be a key demographic on Super Tuesday—February 5th. This fact sheet presents information on young people's voter turnout rates and selected demographics.

Table 1 – 2008 Connecticut Citizens' Educational Attainment, by Age

	Ages 18-29	Ages 30+
Less than High School	22%	10%
High School	22%	30%
Some College	36%	23%
Bachelor or higher	19%	38%

Table 2 – 2008 Connecticut Citizens' Population Estimates, Race/Ethnicity, and Student Status, by Age

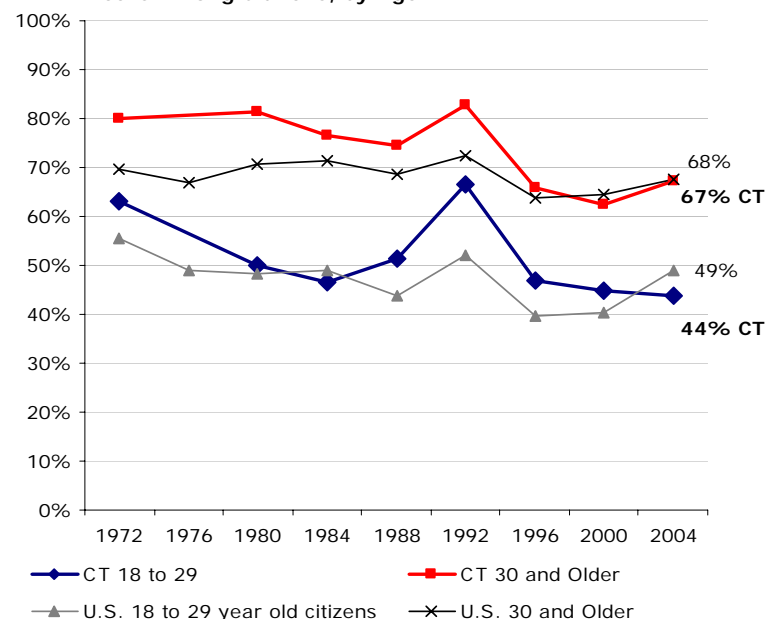
	Total Population	Share of Ages 18+	White non-Hispanic	Other Race/Ethnicity	College Student
Ages 18-29	448,568	18%	77%	23%	29%
Ages 30+	2,016,612	82%	83%	17%	N/A

Source for Tables 1 and 2: Author's tabulations from the Current Population Survey, March (Demographic) Supplement, 2007. To project 2008 population estimates for ages 18-29 and 30+, I allow for a one-year difference (17-28 and 29+) when using 2007 data. 2007 estimates for ages 18-29 and 30+ are available upon request.

Notes

¹ Research Associate. I thank Peter Levine and Emily Kirby for comments on previous drafts of this fact sheet. All errors in fact or interpretation are my own.

Figure 1: Connecticut Voter Turnout in Presidential Years Among Citizens, by Age



Source: Author's tabulations from the Current Population Survey, November (Voting) Supplements, 1972-2004. No 1976 data for CT.