



CIRCLE

The Center for Information & Research on
Civic Learning & Engagement

Quick Facts About Young Voters in Georgia: The Primary Election Year 2008

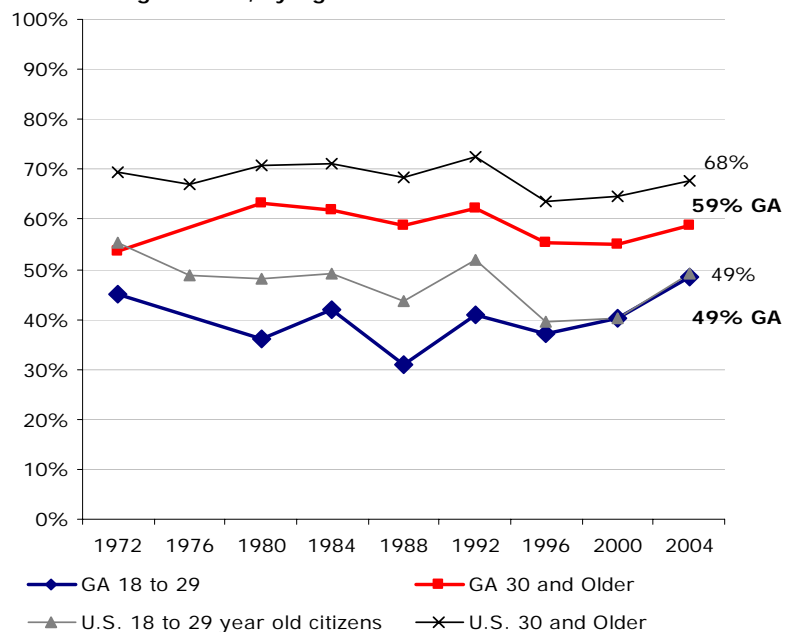
By Karlo Barrios Marcelo¹
January 2008

Georgia's young voters will be a key demographic on Super Tuesday—February 5th. This fact sheet presents information on young people's voter turnout rates and selected demographics.

Table 1 – 2008 Georgia Citizens' Educational Attainment, by Age

	Ages 18-29	Ages 30+
Less than High School	25%	13%
High School	27%	33%
Some College	33%	24%
Bachelor or higher	15%	30%

Figure 1: Georgia Voter Turnout in Presidential Years Among Citizens, by Age



Source: Author's tabulations from the Current Population Survey, November (Voting) Supplements, 1972-2004. No 1976 data for GA.

Table 2 – 2008 Georgia Citizens' Population Estimates, Race/Ethnicity, and Student Status, by Age

	Total Population	Share of Ages 18+	White non-Hispanic	Black NH	Other Race/Ethnicity	College Student
Ages 18-29	1,331,150	21%	62%	31%	7%	23%
Ages 30+	5,087,726	79%	66%	29%	5%	N/A

Source for Tables 1 and 2: Author's tabulations from the Current Population Survey, March (Demographic) Supplement, 2007. To project 2008 population estimates for ages 18-29 and 30+, I allow for a one-year difference (17-28 and 29+) when using 2007 data. 2007 estimates for ages 18-29 and 30+ are available upon request.

Notes

¹ Research Associate. I thank Peter Levine and Emily Kirby for comments on previous drafts of this fact sheet. All errors in fact or interpretation are my own.