



CIRCLE

The Center for Information & Research on
Civic Learning & Engagement

Quick Facts About Young Voters in Illinois: The Primary Election Year 2008

By Karlo Barrios Marcelo¹
January 2008

Illinois' young voters will be a key demographic on Super Tuesday—February 5th. This fact sheet presents information on young people's voter turnout rates and selected demographics.

Table 1 – 2008 Illinois Citizens' Educational Attainment, by Age

| | Ages 18-29 | Ages 30+ |
|-----------------------|------------|----------|
| Less than High School | 20% | 10% |
| High School | 25% | 31% |
| Some College | 37% | 28% |
| Bachelor or higher | 18% | 30% |

Table 2 – 2008 Illinois Citizens' Population Estimates, Race/Ethnicity, and Student Status, by Age

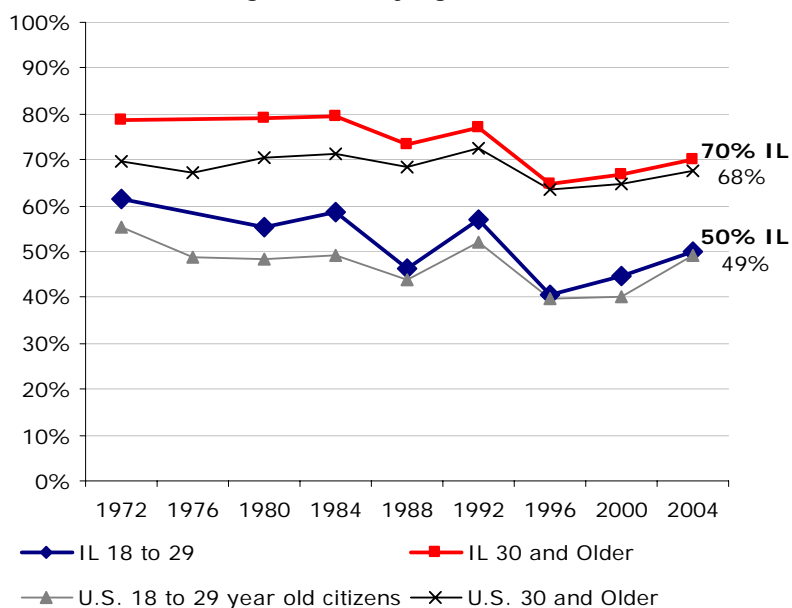
| | Total Population | Share of Ages 18+ | White non-Hispanic | Black non-Hispanic | Hispanic/Latino | College Student |
|-------------------|------------------|-------------------|--------------------|--------------------|-----------------|-----------------|
| Ages 18-29 | 2,067,673 | 24% | 68% | 16% | 11% | 25% |
| Ages 30+ | 6,626,501 | 76% | 75% | 15% | 7% | N/A |

Source for Tables 1 and 2: Author's tabulations from the Current Population Survey, March (Demographic) Supplement, 2007. To project 2008 population estimates for ages 18-29 and 30+, I allow for a one-year difference (17-28 and 29+) when using 2007 data. 2007 estimates for ages 18-29 and 30+ are available upon request.

Notes

¹ Research Associate. I thank Peter Levine and Emily Kirby for comments on previous drafts of this fact sheet. All errors in fact or interpretation are my own.

Figure 1: Illinois Voter Turnout in Presidential Years Among Citizens, by Age



Source: Author's tabulations from the Current Population Survey, November (Voting) Supplements, 1972-2004. No 1976 data for IL.