



## CIRCLE

The Center for Information & Research on  
Civic Learning & Engagement

### Quick Facts About Young Voters in Indiana: The Primary Election Year 2008

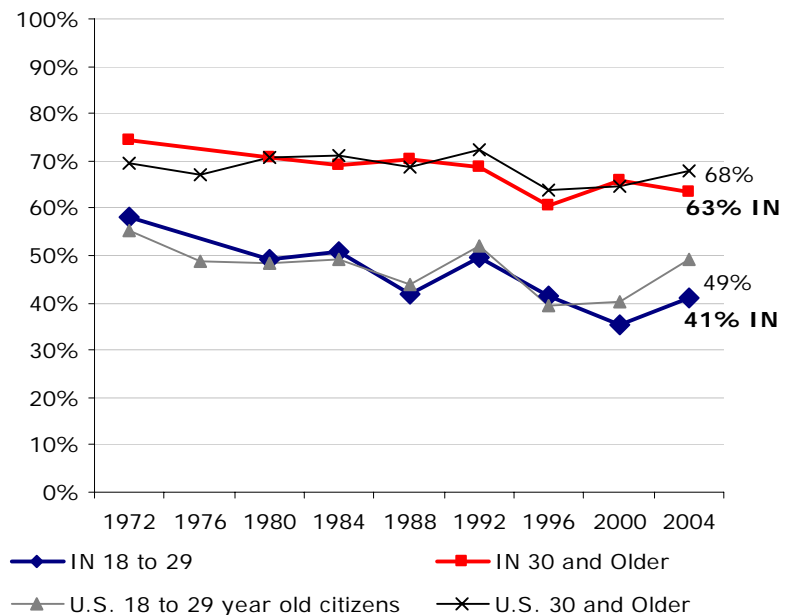
By Karlo Barrios Marcelo<sup>1</sup>  
April 2008

Indiana's young voters are less likely to be college students compared to national average (22 percent). This fact sheet presents information on young people's voter turnout rates and selected demographics.

**Table 1 – 2008 Indiana Citizens' Educational Attainment, by Age**

	Ages 18-29	Ages 30+
Less than High School	29%	12%
High School	29%	42%
Some College	33%	24%
Bachelor or higher	10%	23%

**Figure 1: Indiana Voter Turnout in Presidential Years Among Citizens, by Age**



Source: Author's tabulations from the Current Population Survey, November (Voting) Supplements, 1972-2004. No 1976 data for IN.

**Table 2 – 2008 Indiana Citizens' Population Estimates, Race/Ethnicity, and Student Status, by Age**

	Total Population	Share of Ages 18+	White non-Hispanic	Black non-Hispanic	College Student
<b>Ages 18-29</b>	<b>965,147</b>	<b>20%</b>	<b>84%</b>	<b>12%</b>	<b>17%</b>
Ages 30+	3,746,758	80%	90%	7%	N/A

Source for Tables 1 and 2: Author's tabulations from the Current Population Survey, March (Demographic) Supplement, 2007. To project 2008 population estimates for ages 18-29 and 30+, I allow for a one-year difference (17-28 and 29+) when using 2007 data. 2007 estimates for ages 18-29 and 30+ are available upon request.

#### Notes

<sup>1</sup> Research Associate. I thank Peter Levine and Emily Kirby for comments on previous drafts of this fact sheet. All errors in fact or interpretation are my own.