



CIRCLE

The Center for Information & Research on
Civic Learning & Engagement

Quick Facts About Young Voters in Missouri: The Primary Election Year 2008

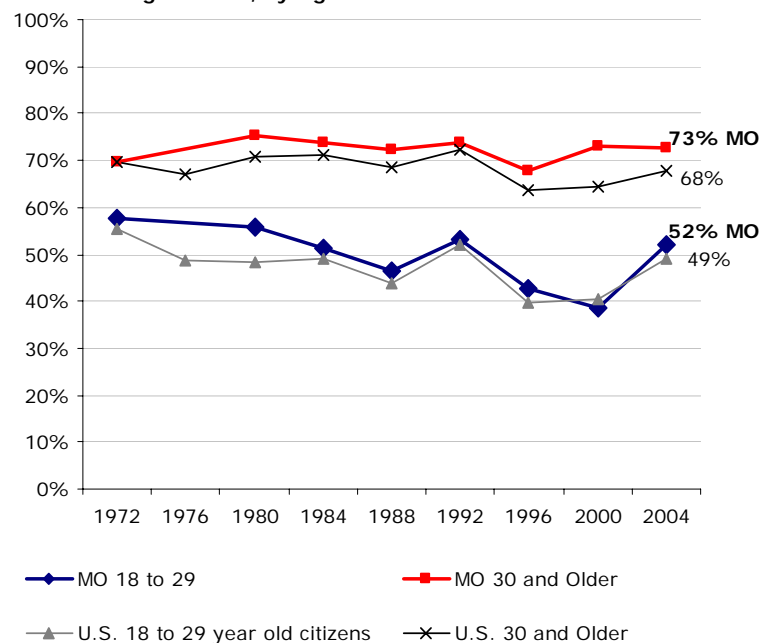
By Karlo Barrios Marcelo¹
January 2008

Missouri's young voters will be a key demographic on Super Tuesday—February 5th. This fact sheet presents information on young people's voter turnout rates and selected demographics).

Table 1 – 2008 Missouri Citizens' Educational Attainment, by Age

| | Ages 18-29 | Ages 30+ |
|-----------------------|------------|----------|
| Less than High School | 19% | 14% |
| High School | 31% | 37% |
| Some College | 31% | 25% |
| Bachelor or higher | 19% | 25% |

Figure 1: Missouri Voter Turnout in Presidential Years Among Citizens, by Age



Source: Author's tabulations from the Current Population Survey, November (Voting) Supplements, 1972-2004. No 1976 data for MO.

Table 2 – 2008 Missouri Citizens' Population Estimates, Race/Ethnicity, and Student Status, by Age

| | Total Population | Share of Ages 18+ | White non-Hispanic | Black | Other Race/Ethnicity | College Student |
|-------------------|------------------|-------------------|--------------------|------------|----------------------|-----------------|
| Ages 18-29 | 913,153 | 21% | 83% | 13% | 4% | 16% |
| Ages 30+ | 3,462,380 | 79% | 86% | 10% | 4% | N/A |

Source for Tables 1 and 2: Author's tabulations from the Current Population Survey, March (Demographic) Supplement, 2007. To project 2008 population estimates for ages 18-29 and 30+, I allow for a one-year difference (17-28 and 29+) when using 2007 data. 2007 estimates for ages 18-29 and 30+ are available upon request.

Notes

¹ Research Associate. I thank Peter Levine and Emily Kirby for comments on previous drafts of this fact sheet. All errors in fact or interpretation are my own.