



CIRCLE

The Center for Information & Research on
Civic Learning & Engagement

Quick Facts About Young Voters in Nebraska: The Primary Election Year 2008

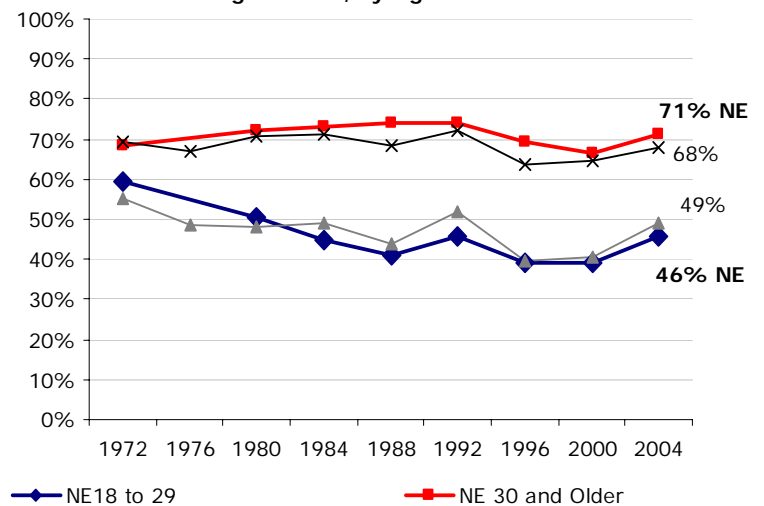
By Karlo Barrios Marcelo¹
February 2008

Nebraska's young voters are less racially diverse than the nation, so the focus will be on college students in the Nebraska primary. This fact sheet presents information on young people's voter turnout rates and selected demographics.

Table 1 – 2008 Nebraska Citizens' Educational Attainment, by Age

	Ages 18-29	Ages 30+
Less than High School	18%	7%
High School	27%	35%
Some College	38%	31%
Bachelor or higher	16%	27%

Figure 1: Nebraska Voter Turnout in Presidential Years Among Citizens, by Age



Source: Author's tabulations from the Current Population Survey, November (Voting) Supplements, 1972-2004. No 1976 data for NE.

Table 2 – 2008 Nebraska Citizens' Population Estimates, Race/Ethnicity, and Student Status, by Age

	Total Population	Share of Ages 18+	White non-Hispanic	Other Race/Ethnicity	College Student
Ages 18-29	311,980	24%	83%	17%	24%
Ages 30+	983,172	76%	90%	10%	N/A

Source for Tables 1 and 2: Author's tabulations from the Current Population Survey, March (Demographic) Supplement, 2007. To project 2008 population estimates for ages 18-29 and 30+, I allow for a one-year difference (17-28 and 29+) when using 2007 data. 2007 estimates for ages 18-29 and 30+ are available upon request.

Notes

¹ Research Associate. I thank Peter Levine and Emily Kirby for comments on previous drafts of this fact sheet. All errors in fact or interpretation are my own.