



## CIRCLE

The Center for Information & Research on  
Civic Learning & Engagement

### Quick Facts About Young Voters in Nevada: The Primary Election Year 2008

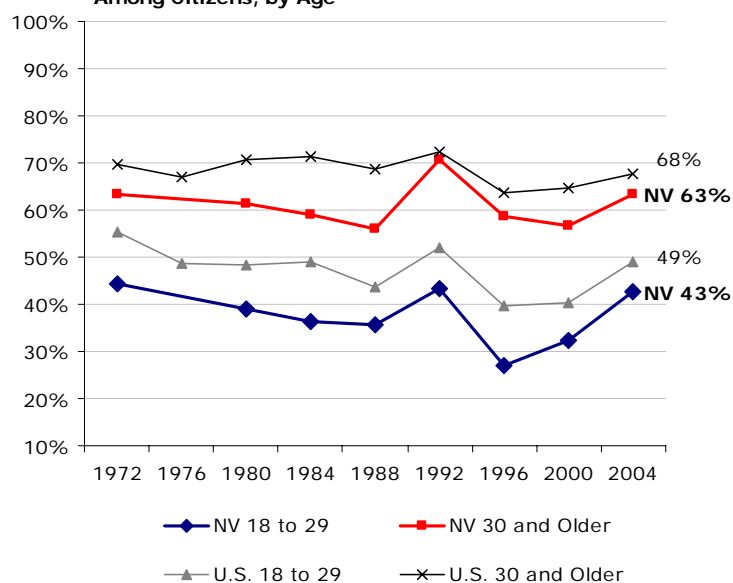
By Karlo Barrios Marcelo<sup>1</sup>  
January 2008

Nevada's importance in the primary season has been elevated in 2008—shining a spotlight on its voters. This fact sheet presents information on young people's voter turnout rates (see Figure 1) and selected demographics (see Tables 1 and 2).

**Table 1 – 2008 Nevada Citizens' Educational Attainment, by Age**

	Ages 18-29	Ages 30+
Less than High School	24%	9%
High School	34%	36%
Some College	32%	29%
Bachelor or higher	10%	26%

**Figure 1: Nevada Voter Turnout in Presidential Years Among Citizens, by Age**



Source: Author's tabulations from the Current Population Survey, November Supplements, 1972-2004. No 1976 data for NV.

**Table 2 – 2008 Nevada Citizens' Population Estimates, Race/Ethnicity, and Student Status, by Age**

	Total Population	Share of Ages 18+	White non-Hispanic	Hispanic/Latino	Other Race/Ethnicity non-Hispanic	College Student
<b>Ages 18-29</b>	<b>367,645</b>	<b>22%</b>	<b>62%</b>	<b>18%</b>	<b>19%</b>	<b>15%</b>
Ages 30+	1,309,064	78%	74%	10%	16%	N/A

Source for Tables 1 and 2: Author's tabulations from the Current Population Survey, March (Demographic) Supplement, 2007. To project 2008 population estimates for ages 18-29 and 30+, I allow for a one-year difference (17-28 and 29+) when using 2007 data. 2007 estimates for ages 18-29 and 30+ are available upon request.

#### Notes

<sup>1</sup> Research Associate. I thank Peter Levine and Emily Kirby for comments on previous drafts of this fact sheet. All errors in fact or interpretation are my own.