



## CIRCLE

The Center for Information & Research on  
Civic Learning & Engagement

### Quick Facts About Young Voters in New York: The Primary Election Year 2008

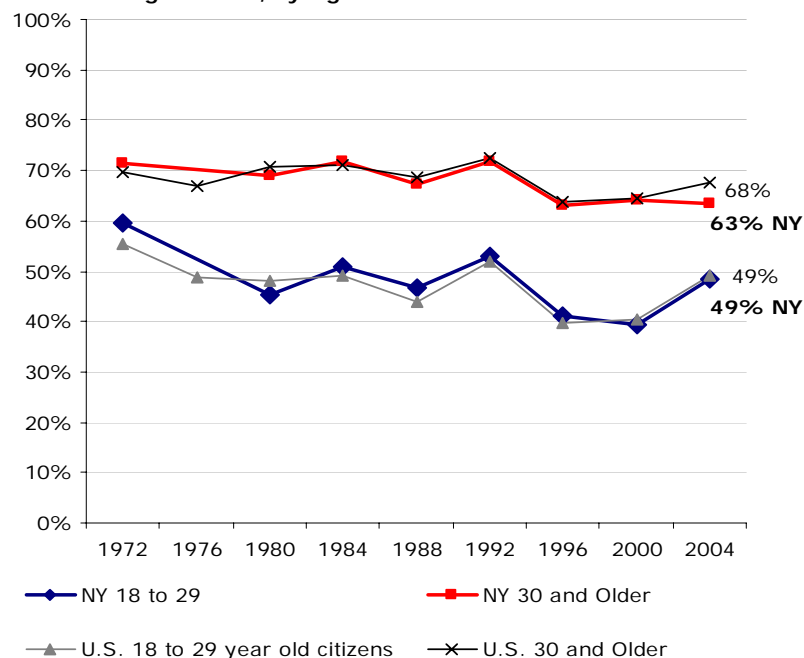
By Karlo Barrios Marcelo<sup>1</sup>  
January 2008

New York's young voters will be a key demographic on Super Tuesday—February 5<sup>th</sup>. This fact sheet presents information on young people's voter turnout rates and selected demographics.

**Table 1 – 2008 New York Citizens' Educational Attainment, by Age**

	Ages 18-29	Ages 30+
Less than High School	24%	12%
High School	24%	33%
Some College	32%	22%
Bachelor or higher	20%	32%

**Figure 1: New York Voter Turnout in Presidential Years Among Citizens, by Age**



Source: Author's tabulations from the Current Population Survey, November (Voting) Supplements, 1972-2004. No 1976 data for NY.

**Table 2 – 2008 New York Citizens' Population Estimates, Race/Ethnicity, and Student Status, by Age**

	Total Population	Share of Ages 18+	White non-Hispanic	Black NH	Hispanic/Latino	Asian/Pacific Islander NH	College Student
<b>Ages 18-29</b>	<b>2,679,884</b>	<b>21%</b>	<b>60%</b>	<b>18%</b>	<b>17%</b>	<b>6%</b>	<b>28%</b>
Ages 30+	10,202,105	79%	70%	12%	11%	6%	N/A

Source for Tables 1 and 2: Author's tabulations from the Current Population Survey, March (Demographic) Supplement, 2007. To project 2008 population estimates for ages 18-29 and 30+, I allow for a one-year difference (17-28 and 29+) when using 2007 data. 2007 estimates for ages 18-29 and 30+ are available upon request.

#### Notes

<sup>1</sup> Research Associate. I thank Peter Levine and Emily Kirby for comments on previous drafts of this fact sheet. All errors in fact or interpretation are my own.