



CIRCLE

The Center for Information & Research on
Civic Learning & Engagement

Quick Facts About Young Voters in Ohio: The Primary Election Year 2008

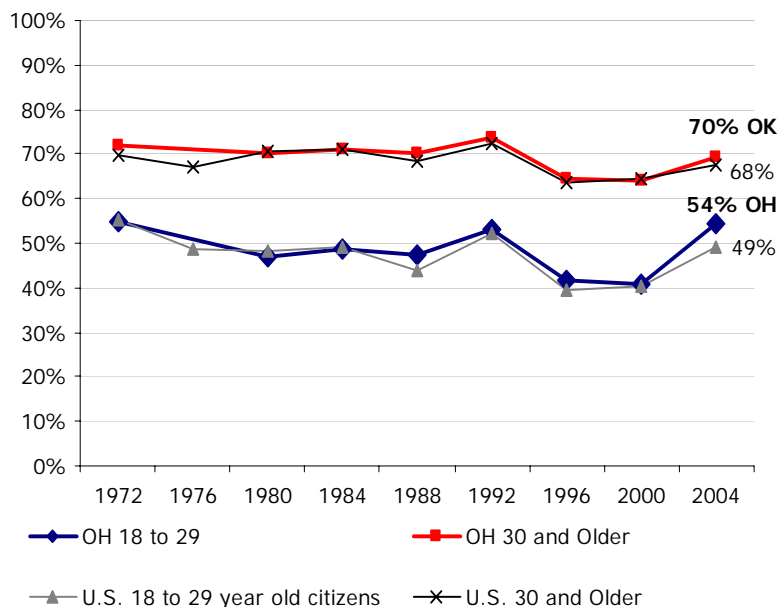
By Karlo Barrios Marcelo¹
February 2008

Ohio's young voters are less likely to be college students than the national average. This fact sheet presents information on young people's voter turnout rates and selected demographics.

Table 1 – 2008 Ohio Citizens' Educational Attainment, by Age

	Ages 18-29	Ages 30+
Less than High School	23%	11%
High School	30%	40%
Some College	32%	25%
Bachelor or higher	15%	24%

Figure 1: Ohio Voter Turnout in Presidential Years Among Citizens, by Age



Source: Author's tabulations from the Current Population Survey, November (Voting) Supplements, 1972-2004. No 1976 data for OH.

Table 2 – 2008 Ohio Citizens' Population Estimates, Race/Ethnicity, and Student Status, by Age

	Total Population	Share of Ages 18+	White non-Hispanic	Black non-Hispanic	College Student
Ages 18-29	1,750,179	21%	83%	12%	18%
Ages 30+	6,751,541	79%	87%	10%	N/A

Source for Tables 1 and 2: Author's tabulations from the Current Population Survey, March (Demographic) Supplement, 2007. To project 2008 population estimates for ages 18-29 and 30+, I allow for a one-year difference (17-28 and 29+) when using 2007 data. 2007 estimates for ages 18-29 and 30+ are available upon request.

Notes

¹ Research Associate. I thank Peter Levine and Emily Kirby for comments on previous drafts of this fact sheet. All errors in fact or interpretation are my own.