



CIRCLE

The Center for Information & Research on
Civic Learning & Engagement

Quick Facts About Young Voters in South Carolina: The Primary Election Year 2008

By Karlo Barrios Marcelo¹
January 2008

South Carolina's youth are more diverse and have lower educational attainment levels than their adult counterparts. This fact sheet presents information on young people's voter turnout rates (see Figure 1) and selected demographics (see Tables 1 and 2).

Table 1 – 2008 Citizens' Educational Attainment, South Carolina, by Age

| | Ages 18-29 | Ages 30+ |
|-----------------------|------------|----------|
| Less than High School | 22% | 18% |
| High School | 32% | 34% |
| Some College | 34% | 24% |
| Bachelor or higher | 12% | 24% |

Table 2 – 2008 Citizens' Population Estimates, Race/Ethnicity, and Student Status, South Carolina, by Age

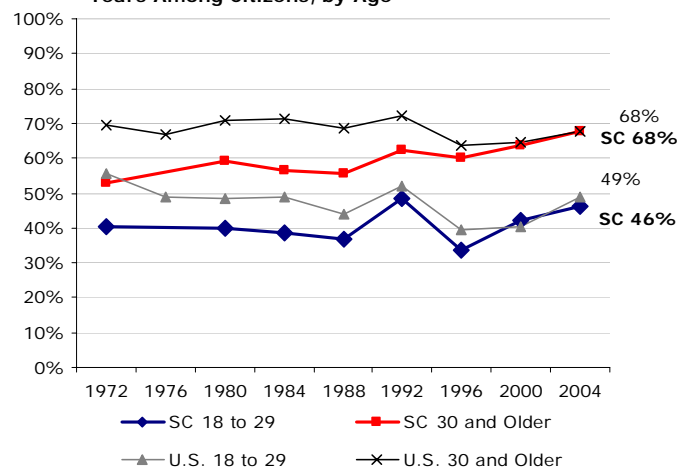
| | Total Population | Share of Ages 18+ | White non-Hispanic | Black non-Hispanic | Other Race/Ethnicity | College Student |
|-------------------|------------------|-------------------|--------------------|--------------------|----------------------|-----------------|
| Ages 18-29 | 612,463 | 20% | 62% | 34% | 4% | 18% |
| Ages 30+ | 2,520,333 | 80% | 71% | 27% | 3% | N/A |

Source for Tables 1 and 2: Author's tabulations from the Current Population Survey, March (Demographic) Supplement, 2007. To project 2008 population estimates for ages 18-29 and 30+, I allow for a one-year difference (17-28 and 29+) when using 2007 data. 2007 estimates for ages 18-29 and 30+ are available upon request.

Notes

¹ Research Associate. I thank Peter Levine and Emily Kirby for comments on previous drafts of this fact sheet. All errors in fact or interpretation are my own.

Figure 1: South Carolina Voter Turnout in Presidential Years Among Citizens, by Age



Source: Author's tabulations from the Current Population Survey, November (Voting) Supplements, 1972-2004. No 1976 data for SC.