

Quick Facts about Young Voters in California

Below are selected characteristics for California including estimates of the number of young voters, registration and voter turnout rates both for the state and the nation, and other election- and demographic-related information about citizens age 18-29.

2014 MIDTERM

2012 PRESIDENTIAL

	CA		US			CA		US	
	18-29	30+	18-29	30+		18-29	30+	18-29	30+
Voter Turnout	10.0%	36.2%	13.0%	42.9%	Voter Turnout	35.1%	59.9%	38.9%	64.2%
Youth Share	7.7%	92.3%	7.6%	92.4%	Youth Share	15.4%	84.6%	11.6%	88.4%
Votes Cast (in thousands)	574	6842	6274	76457	Votes Cast (in thousands)	1976	10886	15044	114449

(CIRCLE analysis of Catalyst Voter File and U.S. Census American Community Survey¹)

YOUTH DEMOGRAPHICS

(Citizens age 18 to 29— CIRCLE analysis of U.S. Current Population Survey March 2015 Supplement)

Citizen Population	CA		US		Race	CA		US		Gender / Family	CA		US			
	Total (in millions for 18+)	Youth 18-29 (in thousands)	Youth Share	CA		US	African American	Asian American	Latino		Native American ^a	Native Hawaiian ^b	White	Other	Women	Men
Total (in millions for 18+)	24.8	221	23.5%	5.7%	14.0%	13.5%	45.5%	1.0%	0.7%	31.2%	2.5%	48.5%	50.3%	51.5%	17.1%	18.5%
Youth 18-29 (in thousands)	5842.8	46648.5	21.1%	1.0%	1.1%	0.7%	44.5%	0.7%	0.4%	55.6%	2.1%	13.4%	17.1%	13.4%	17.1%	18.5%
Youth Share	23.5%	21.1%	21.1%	0.7%	0.4%	0.7%	44.5%	0.7%	0.4%	55.6%	2.1%	13.4%	17.1%	13.4%	17.1%	18.5%
College Experience	CA	US	CA	US	CA	US	CA	US	CA	US	CA	US	CA	US	CA	US
No College	40.6%	40.4%	40.6%	40.4%	40.6%	40.4%	40.6%	40.4%	40.6%	40.4%	40.6%	40.4%	40.6%	40.4%	40.6%	40.4%
Some College	59.4%	59.6%	59.4%	59.6%	59.4%	59.6%	59.4%	59.6%	59.4%	59.6%	59.4%	59.6%	59.4%	59.6%	59.4%	59.6%
^a includes Native Alaskans / ^b includes Pacific Islanders																

YOUTH VOTER TURNOUT

(CIRCLE Analyses of CPS Nov. Supplements)

	2014		2012	
	CA	US	CA	US
Voters 18-21 years old	14.3%	15.1%	37.4%	38.3%
African American	**	22.9%	50.5%	53.1%
Asian American	32.2%	12.6%	50.5%	37.1%
White	20.6%	19.8%	51.0%	44.1%
Latino	14.5%	13.8%	39.0%	36.9%
Men	14.8%	18.3%	41.1%	41.5%
Women	18.4%	21.3%	46.5%	48.6%

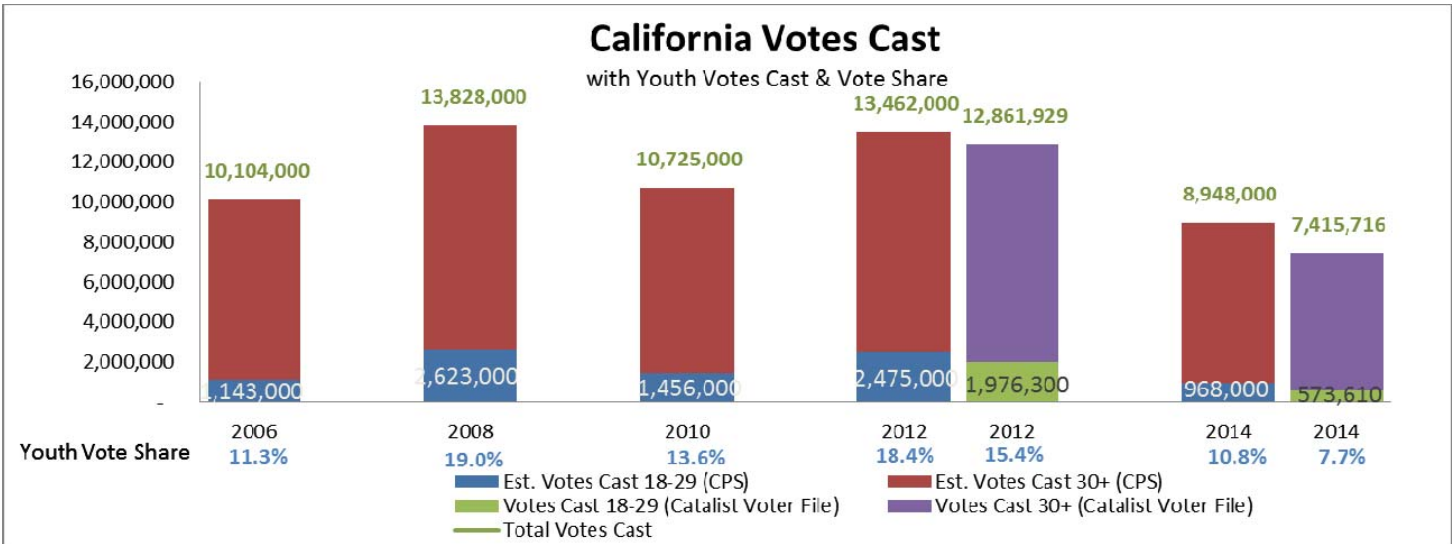
POLITICAL CLIMATE

Governor	
Democrat	
State Senate	State House
Democrat Control	Democrat Control
26 (D) / 14 (R) / 0 (O)	52 (D) / 28 (R) / 0 (O)
Battleground State in 2016?	
leaning Democrat	

(Sources: MultiState.com and average of Cook Political Report (8/12/15), Rothenberg & Gonzales (3/6/15), and Sabato Crystal Ball (5/12/15))

¹We calculate voter turnout by dividing the estimated number of votes cast by estimated total citizen population. We gather data from three sources: **Exit Polls** to estimate the youth vote share, which is in turn used to calculate the number of youth votes cast (% youth share x total votes cast, based on **Federal Election Commission** reporting); **The American Community Survey** to estimate youth citizen population.

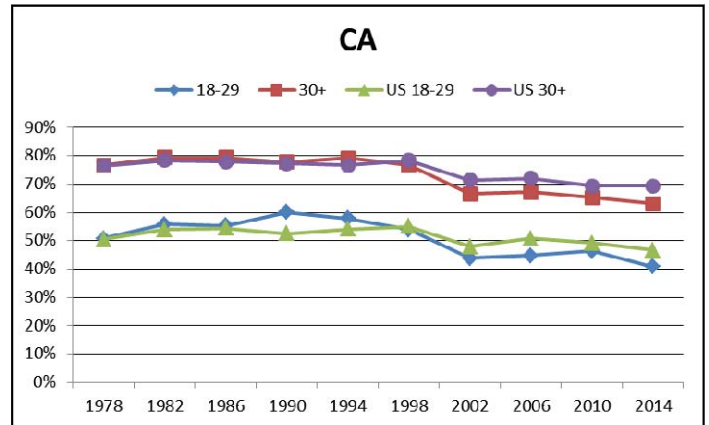
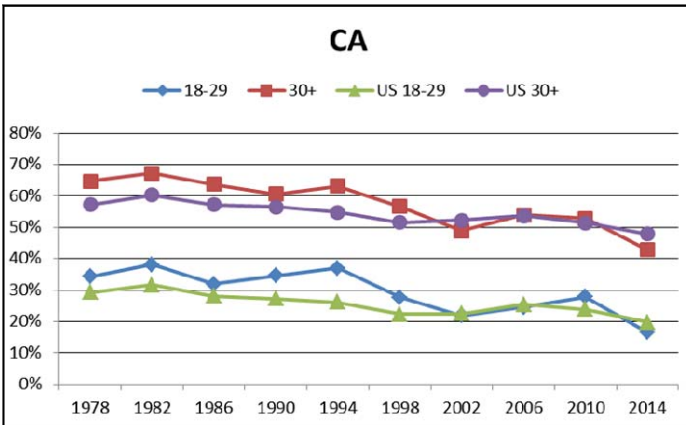
The bar graph below shows vote 2006-2014. For 2012 and 2014, we can provide youth vote counts tallies from Catalyst (which aggregates voter file information) and we include them here because the voter file is the most accurate data source about vote counts than any survey measure. For the states that have age-related data available, the bar graph also displays the youth vote counts. Other estimates in the graph are from Census Current Population Survey (CPS). The line graphs track the CPS-based voting and registration trends by age over time and how they track with the national average. We recommend only using line graphs to understand trends and calculating or estimating or specifying the percentage estimates by looking at the line graph.



MIDTERM ELECTIONS

Voter Turnout Rate

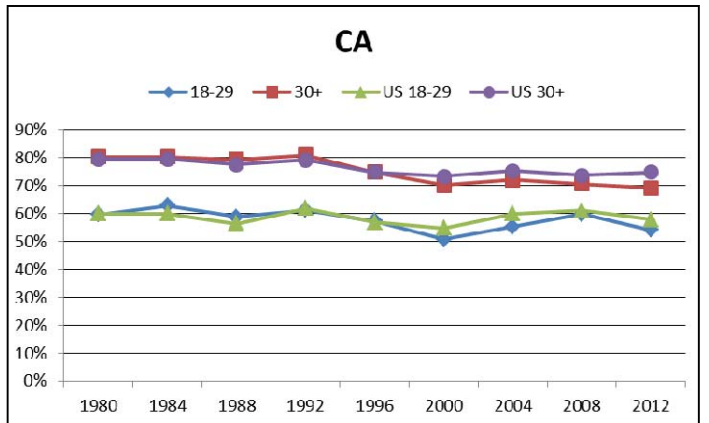
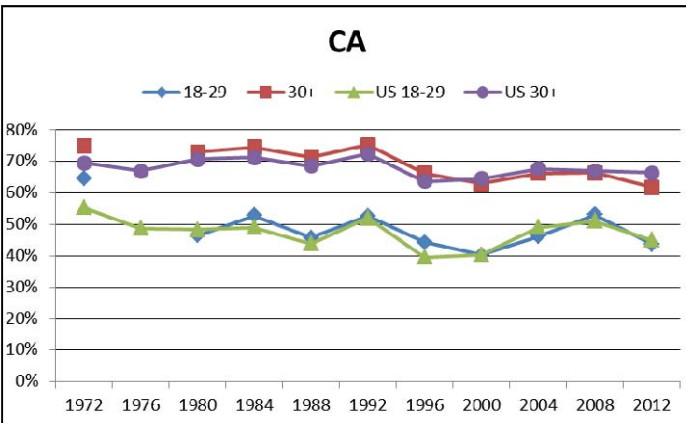
Voter Registration Rate



PRESIDENTIAL ELECTIONS

Voter Turnout Rate

Voter Registration Rate



CIRCLE (The Center for Information and Research on Civic Learning & Engagement) is the leading source of authoritative research on the civic and political engagement of young Americans, especially those who are marginalized or disadvantaged. It is housed at the Jonathan M. Tisch College of Citizenship and Public Service at Tufts University.

