

## Quick Facts about Young Voters in Maryland

Below are selected characteristics for Maryland including estimates of the number of young voters, registration and voter turnout rates both for the state and the nation, and other election- and demographic-related information about citizens age 18-29.

### 2014 MIDTERM

### 2012 PRESIDENTIAL

	MD		US			MD		US	
	18-29	30+	18-29	30+		18-29	30+	18-29	30+
Voter Turnout	17.4%	47.9%	13.0%	42.9%	Voter Turnout	50.4%	70.3%	38.9%	64.2%
Youth Share	8.9%	91.1%	7.6%	92.4%	Youth Share	16.4%	83.6%	11.6%	88.4%
Votes Cast (in thousands)	155	1590	6274	76457	Votes Cast (in thousands)	447	2286	15044	114449

(CIRCLE analysis of Catalyst Voter File and U.S. Census American Community Survey<sup>1</sup>)

## YOUTH DEMOGRAPHICS

(Citizens age 18 to 29— CIRCLE analysis of U.S. Current Population Survey March 2015 Supplement)

Citizen Population	MD		US		Race	MD		US		Gender / Family	MD		US	
	MD	US	MD	US		MD	US	MD	US		MD	US		
Total (in millions for 18+)	4.2	221	African American	33.8%	14.0%	Women	50.5%	50.3%						
Youth 18-29 (in thousands)	893.9	46648.5	Asian American	3.6%	5.8%	Men	49.5%	49.7%						
Youth Share	21.5%	21.1%	Latino	10.3%	21.0%	Married	14.2%	17.1%						
College Experience	MD	US	Native American <sup>a</sup>	0.5%	1.1%	Have Children (under 18)	16.1%	18.5%						
			Native Hawaiian <sup>b</sup>	0.8%	.4%	Immigration	MD	US						
			White	49.4%	55.6%				Born outside of U.S.	5.7%	4.5%			
			Other	1.5%	2.1%				Have a parent born outside of U.S.	19.0%	20.6%			

<sup>a</sup> includes Native Alaskans / <sup>b</sup> includes Pacific Islanders

### YOUTH VOTER TURNOUT

(CIRCLE Analyses of CPS Nov. Supplements)

	2014		2012	
	MD	US	MD	US
Voters 18-21 years old	23.3%	15.1%	38.8%	38.3%
African American	**	22.9%	57.0%	53.1%
Asian American	**	12.6%	57.0%	37.1%
White	25.2%	19.8%	48.6%	44.1%
Latino	**	13.8%	**	36.9%
Men	23.5%	18.3%	47.5%	41.5%
Women	29.2%	21.3%	53.0%	48.6%

### POLITICAL CLIMATE

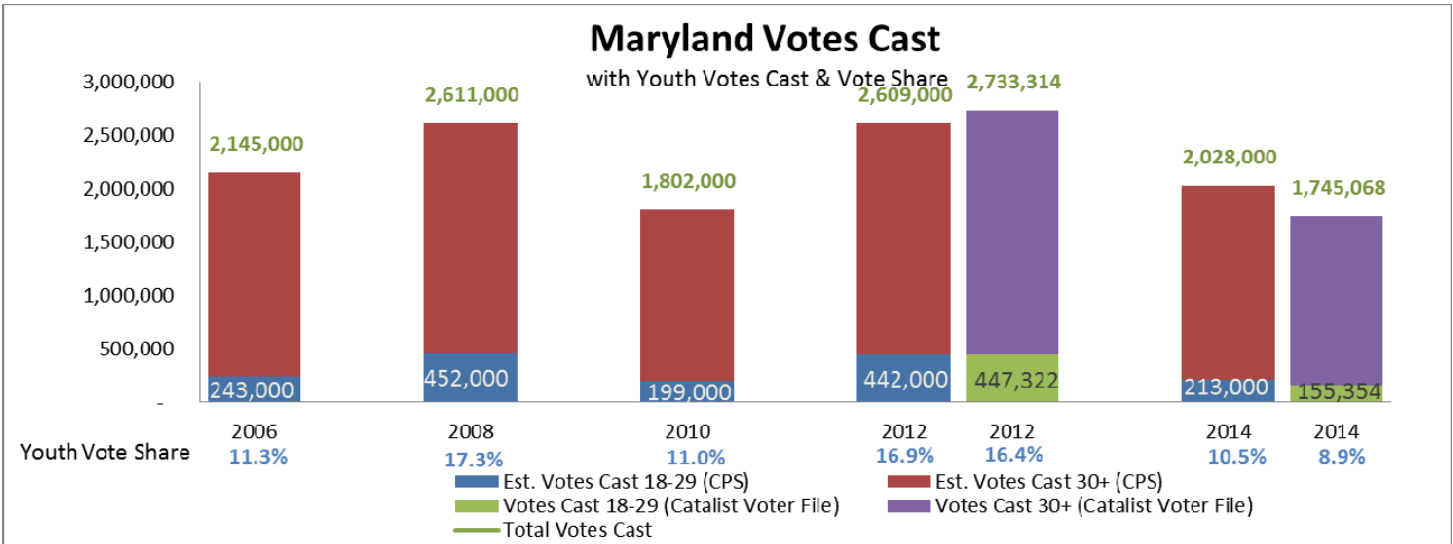
Governor	
Republican	
State Senate	State House
Democrat Control	Democrat Control
33 (D) / 14 (R) / 0 (O)	90 (D) / 51 (R) / 0 (O)

**Battleground State in 2016?**  
leaning Democrat

(Sources: MultiState.com and average of Cook Political Report (8/12/15), Rothenberg & Gonzales (3/6/15), and Sabato Crystal Ball (5/12/15))

<sup>1</sup>We calculate voter turnout by dividing the estimated number of votes cast by estimated total citizen population. We gather data from three sources: **Exit Polls** to estimate the youth vote share, which is in turn used to calculate the number of youth votes cast (% youth share x total votes cast, based on **Federal Election Commission** reporting); **The American Community Survey** to estimate youth citizen population.

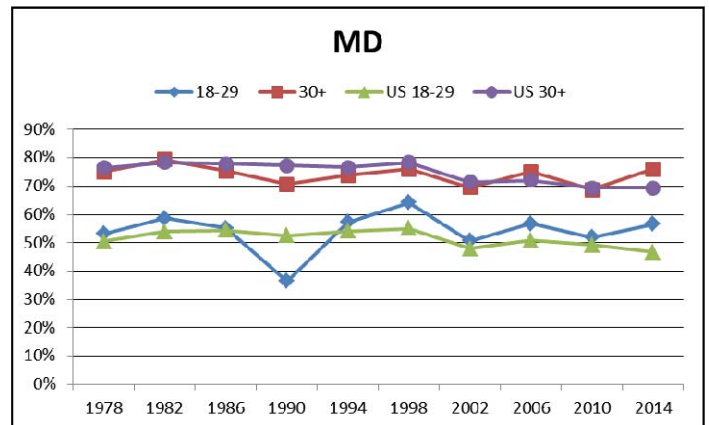
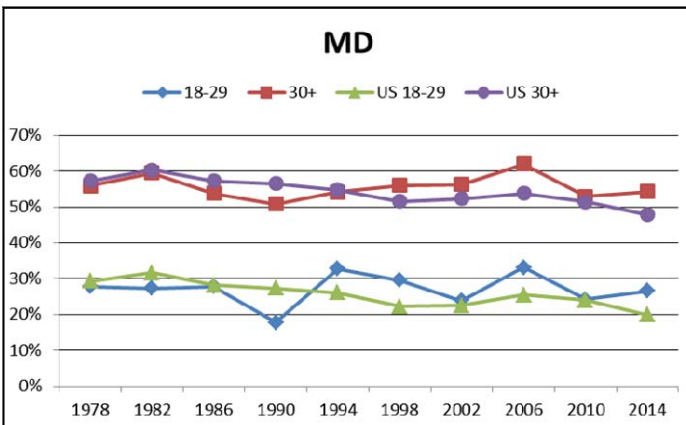
The bar graph below shows vote 2006-2014. For 2012 and 2014, we can provide youth vote counts tallies from Catalyst (which aggregates voter file information) and we include them here because the voter file is the most accurate data source about vote counts than any survey measure. For the states that have age-related data available, the bar graph also displays the youth vote counts. Other estimates in the graph are from Census Current Population Survey (CPS). The line graphs track the CPS-based voting and registration trends by age over time and how they track with the national average. We recommend only using line graphs to understand trends and calculating or estimating or specifying the percentage estimates by looking at the line graph.



## MIDTERM ELECTIONS

**Voter Turnout Rate**

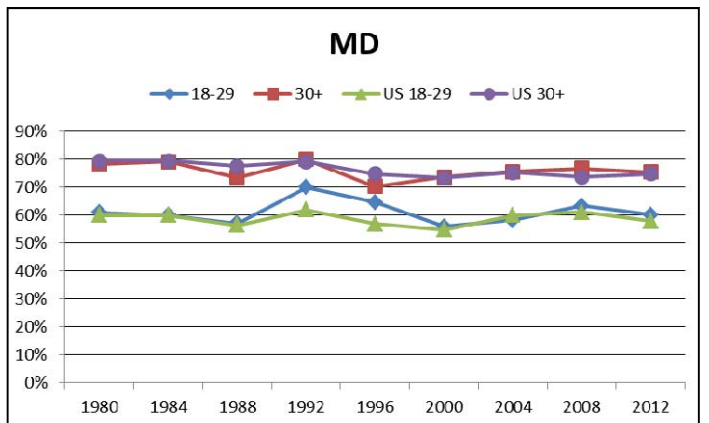
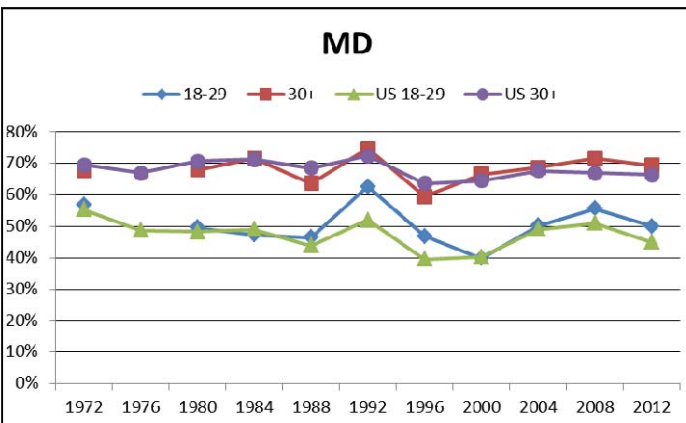
**Voter Registration Rate**



## PRESIDENTIAL ELECTIONS

**Voter Turnout Rate**

**Voter Registration Rate**



CIRCLE (The Center for Information and Research on Civic Learning & Engagement) is the leading source of authoritative research on the civic and political engagement of young Americans, especially those who are marginalized or disadvantaged. It is housed at the Jonathan M. Tisch College of Citizenship and Public Service at Tufts University.

