

Quick Facts about Young Voters in Nevada

Below are selected characteristics for Nevada including estimates of the number of young voters, registration and voter turnout rates both for the state and the nation, and other election- and demographic-related information about citizens age 18-29.

2014 MIDTERM

2012 PRESIDENTIAL

	NV		US			NV		US	
	18-29	30+	18-29	30+		18-29	30+	18-29	30+
Voter Turnout	8.3%	33.9%	13.0%	42.9%	Voter Turnout	39.2%	60.7%	38.9%	64.2%
Youth Share	6.2%	93.8%	7.6%	92.4%	Youth Share	15.0%	85.0%	11.6%	88.4%
Votes Cast (in thousands)	33	507	6274	76457	Votes Cast (in thousands)	153	865	15044	114449

(CIRCLE analysis of Catalist Voter File and U.S. Census American Community Survey¹)

YOUTH DEMOGRAPHICS

(Citizens age 18 to 29— CIRCLE analysis of U.S. Current Population Survey March 2015 Supplement)

Citizen Population	NV		US		Race	NV		US		Gender / Family	NV		US	
Total (in millions for 18+)	1.9	221	African American	10.3%	14.0%	Women	42.6%	50.3%						
Youth 18-29 (in thousands)	376.8	46648.5	Asian American	6.7%	5.8%	Men	57.4%	49.7%						
Youth Share	20.0%	21.1%	Latino	36.3%	21.0%	Married	14.1%	17.1%						
College Experience	NV	US	Native American ^a	2.5%	1.1%	Have Children (under 18)	20.2%	18.5%						
			Native Hawaiian ^b	1.5%	.4%	Immigration	NV	US						
			White	40.4%	55.6%				Born outside of U.S.	6.0%	4.5%			
			Other	2.3%	2.1%				Have a parent born outside of U.S.	29.6%	20.6%			
No College	50.3%	40.4%												
Some College	49.7%	59.6%												

^a includes Native Alaskans / ^b includes Pacific Islanders

YOUTH VOTER TURNOUT

(CIRCLE Analyses of CPS Nov. Supplements)

	2014		2012	
	NV	US	NV	US
Voters 18-21 years old	15.9%	15.1%	46.0%	38.3%
African American	**	22.9%	**	53.1%
Asian American	**	12.6%	**	37.1%
White	22.2%	19.8%	37.7%	44.1%
Latino	**	13.8%	**	36.9%
Men	20.7%	18.3%	38.6%	41.5%
Women	19.5%	21.3%	46.8%	48.6%

POLITICAL CLIMATE

Governor

Republican

State Senate

Republican Control
10 (D) / 11 (R) / 0 (O)

State House

Republican Control
17 (D) / 25 (R) / 0 (O)

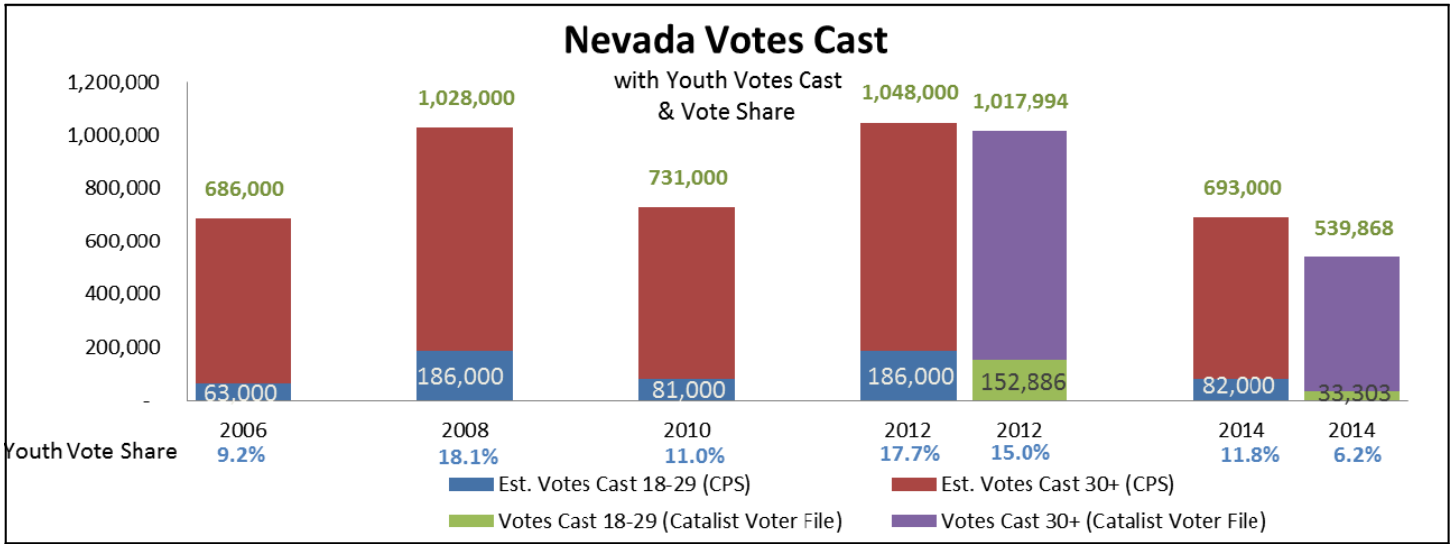
Battleground State in 2016?

Tossup

(Sources: MultiState.com and average of Cook Political Report (8/12/15), Rothenberg & Gonzales (3/6/15), and Sabato Crystal Ball (5/12/15))

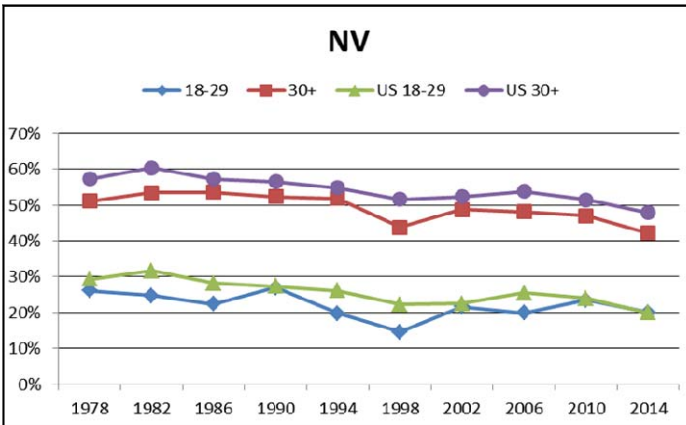
¹We calculate voter turnout by dividing the estimated number of votes cast by estimated total citizen population. We gather data from three sources: **Exit Polls** to estimate the youth vote share, which is in turn used to calculate the number of youth votes cast (% youth share x total votes cast, based on **Federal Election Commission** reporting); **The American Community Survey** to estimate youth citizen population.

The bar graph below shows vote 2006-2014. For 2012 and 2014, we can provide youth vote counts tallies from Catalyst (which aggregates voter file information) and we include them here because the voter file is the most accurate data source about vote counts than any survey measure. For the states that have age-related data available, the bar graph also displays the youth vote counts. Other estimates in the graph are from Census Current Population Survey (CPS). The line graphs track the CPS-based voting and registration trends by age over time and how they track with the national average. We recommend only using line graphs to understand trends and calculating or estimating or specifying the percentage estimates by looking at the line graph.

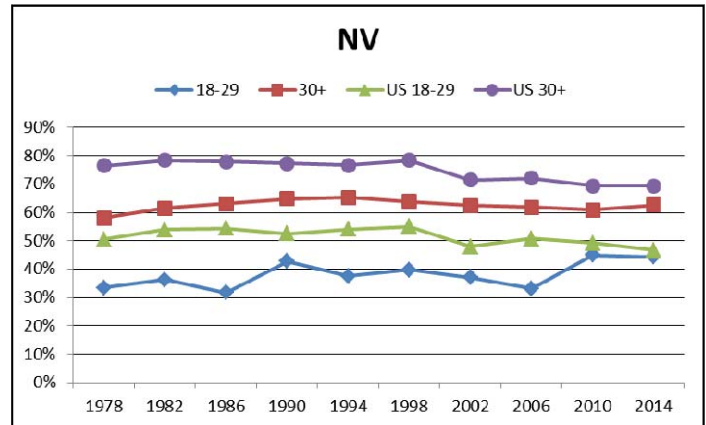


MIDTERM ELECTIONS

Voter Turnout Rate

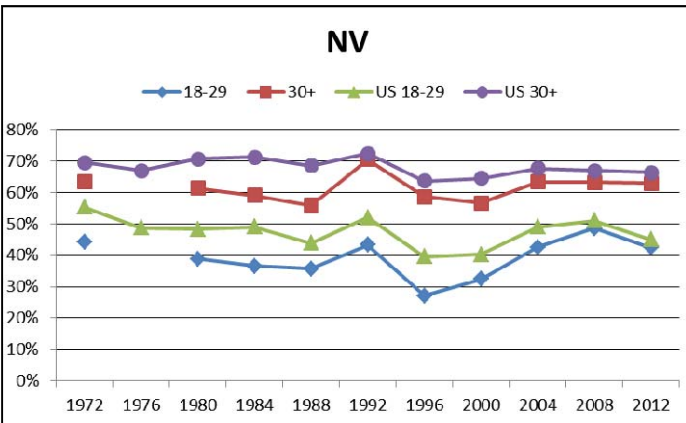


Voter Registration Rate

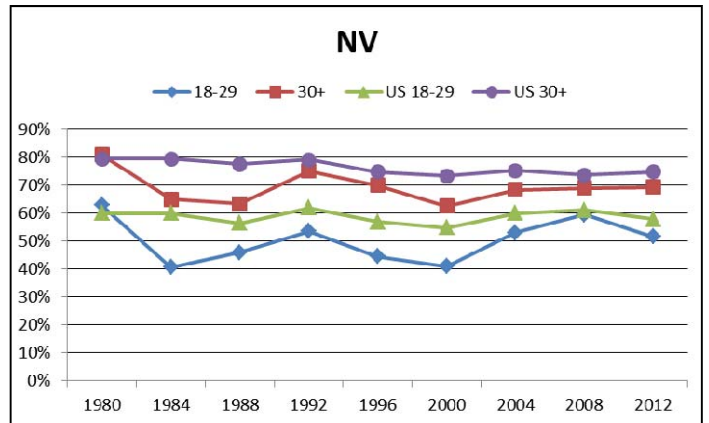


PRESIDENTIAL ELECTIONS

Voter Turnout Rate



Voter Registration Rate



CIRCLE (The Center for Information and Research on Civic Learning & Engagement) is the leading source of authoritative research on the civic and political engagement of young Americans, especially those who are marginalized or disadvantaged. It is housed at the Jonathan M. Tisch College of Citizenship and Public Service at Tufts University.

